

JVC

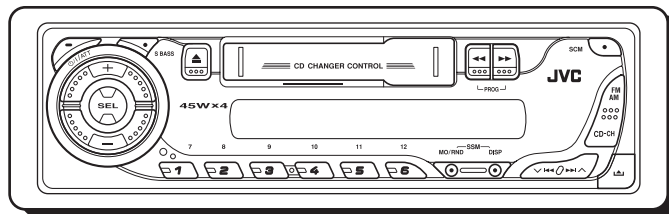
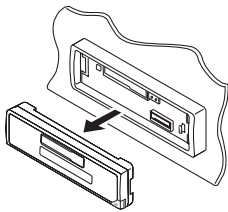
SCHEMATIC DIAGRAMS

CASSETTE RECEIVER

KS-FX385, KS-FX385S KS-FX385G

CD-ROM No.SML200504

Detachable



KS-FX385

Area suffix

UT ----- Taiwan
UH ----- Thailand
UN ----- Indonesia
U ----- Other Areas

KS-FX385S

Area suffix

UN ----- Indonesia

KS-FX385G


Area suffix

UN ----- Indonesia

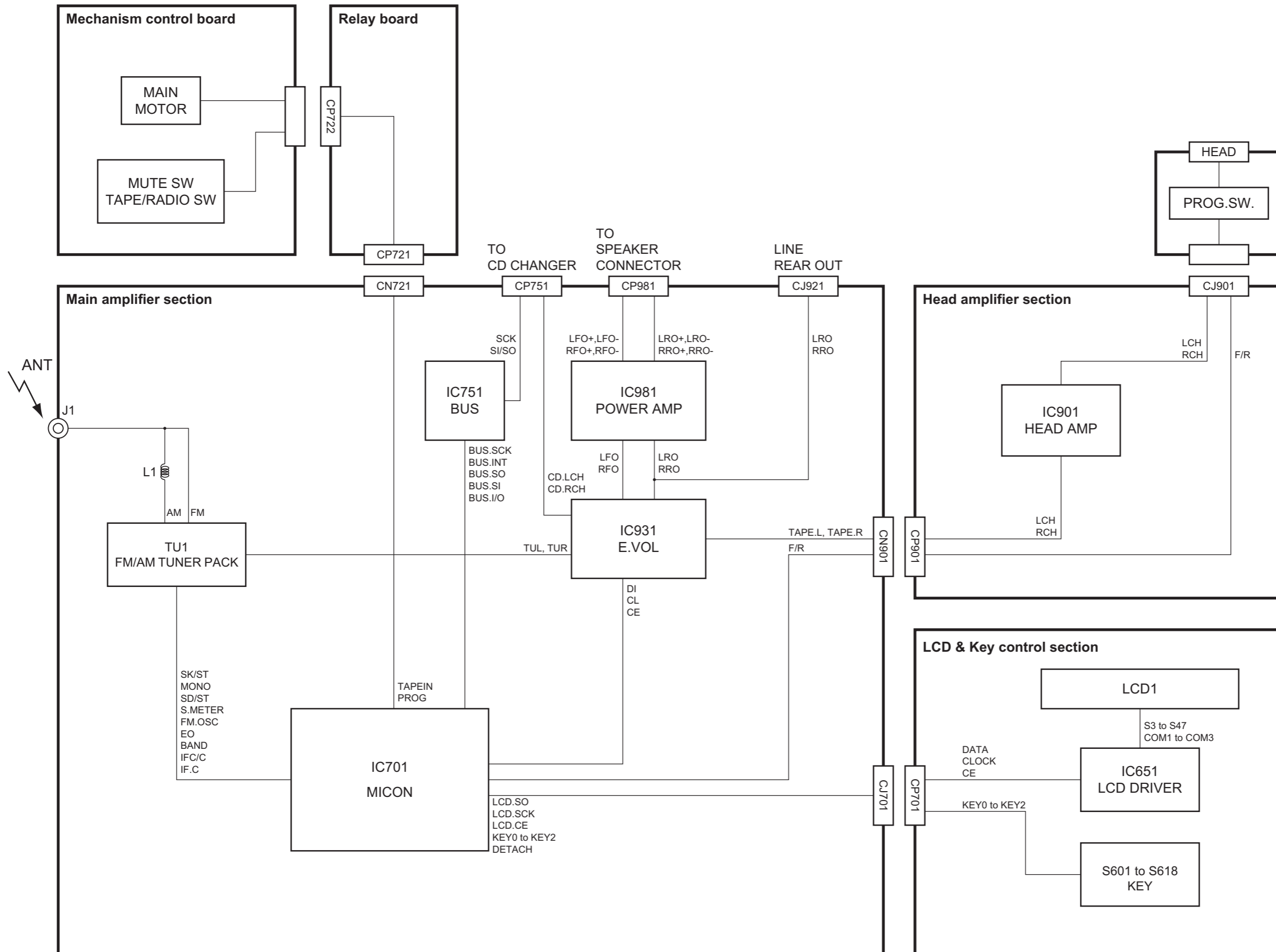
Contents

Block diagram (For UT, UH, UN U version)	2-1
Standard schematic diagrams (For UT, UH, UN U version)	2-2
Block diagram (For UT3, UH3, UN3 U3 version)	2-5
Standard schematic diagrams (For UT3, UH3, UN3 U3 version)	2-6
Printed circuit boards	2-9 to 11

Safety precaution

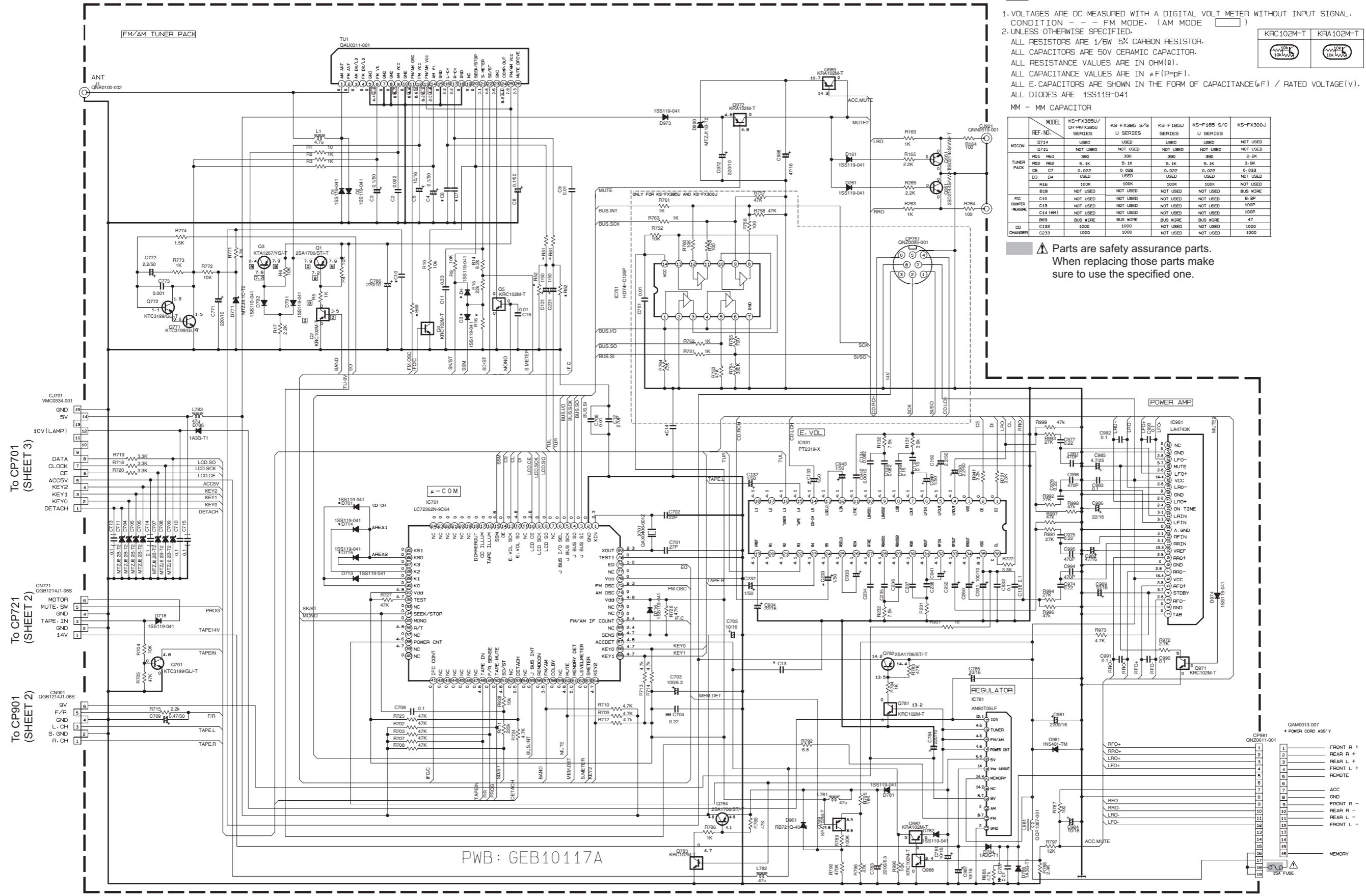
 **CAUTION** Burrs formed during molding may be left over on some parts of the chassis. Therefore, pay attention to such burrs in the case of performing repair of this system.

Block diagram (For UT, UH, UN, U version)

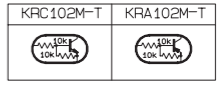


Standard schematic diagrams (For UT, UH, UN, U version)

■ Main amplifier section



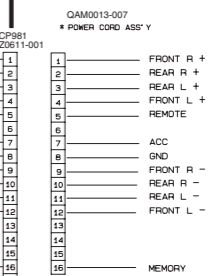
1. VOLTAGES ARE DC-MEASURED WITH A DIGITAL VOLT METER WITHOUT INPUT SIGNAL.
 CONDITION - - - FM MODE. (AM MODE)
 2. UNLESS OTHERWISE SPECIFIED:
 ALL RESISTORS ARE 1/6W 5% CARBON RESISTOR.
 ALL CAPACITORS ARE 50V CERAMIC CAPACITOR.
 ALL RESISTANCE VALUES ARE IN OHM(Ω).
 ALL CAPACITANCE VALUES ARE IN #F(P=PF).
 ALL E. CAPACITORS ARE SHOWN IN THE FORM OF CAPACITANCE(μF) / RATED VOLTAGE(V).
 ALL DIODES ARE 1SS119-041
 MM - MM CAPACITOR



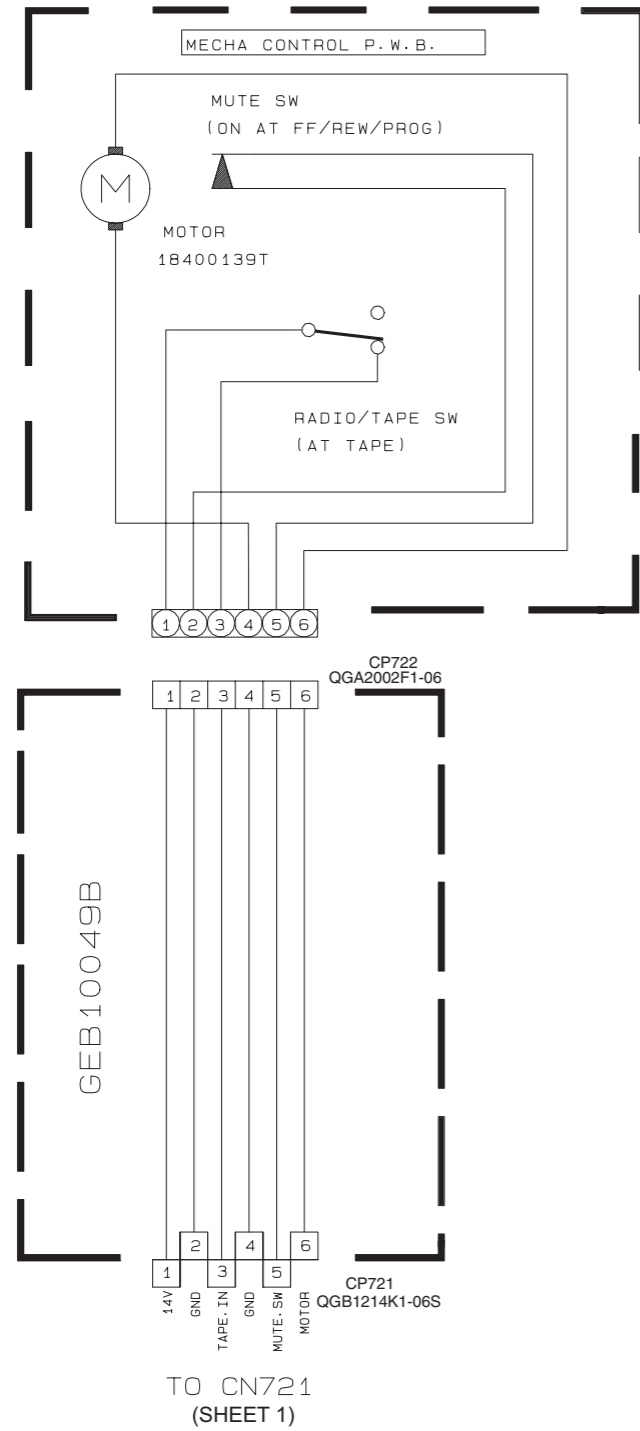
MODEL REF. NO.	KS-FX385U/ OH-PHF385U SERIES	KS-FX385 S/G U SERIES	KS-F185U SERIES	KS-F185 S/G U SERIES	KS-FX300J
MICDN	D714 USED	USED	USED	NOT USED	NOT USED
	D715 NOT USED	NOT USED	NOT USED	NOT USED	NOT USED
TUNER PACK	R51 R61 390	390	390	390	2.2K
	R52 R62 5.1K	5.1K	5.1K	5.1K	3.9K
	C6 C7 0.022	0.022	0.022	0.022	0.033
	D3 D4 USED	USED	USED	USED	NOT USED
	R16 100K	100K	100K	100K	NOT USED
	R18 NOT USED	NOT USED	NOT USED	NOT USED	NOT USED
FCC COUNTER	C10 NOT USED	NOT USED	NOT USED	NOT USED	8.2P
HEADFE	C13 NOT USED	NOT USED	NOT USED	NOT USED	100P
	C14 (1M) NOT USED	NOT USED	NOT USED	NOT USED	100P
	B69 BUS WIRE	BUS WIRE	BUS WIRE	BUS WIRE	47
CD	C133 1000	1000	NOT USED	NOT USED	1000
CHANGER	C233 1000	1000	NOT USED	NOT USED	1000

⚠ Parts are safety assurance parts.
 When replacing those parts make sure to use the specified one.

PWB: GEB10117A

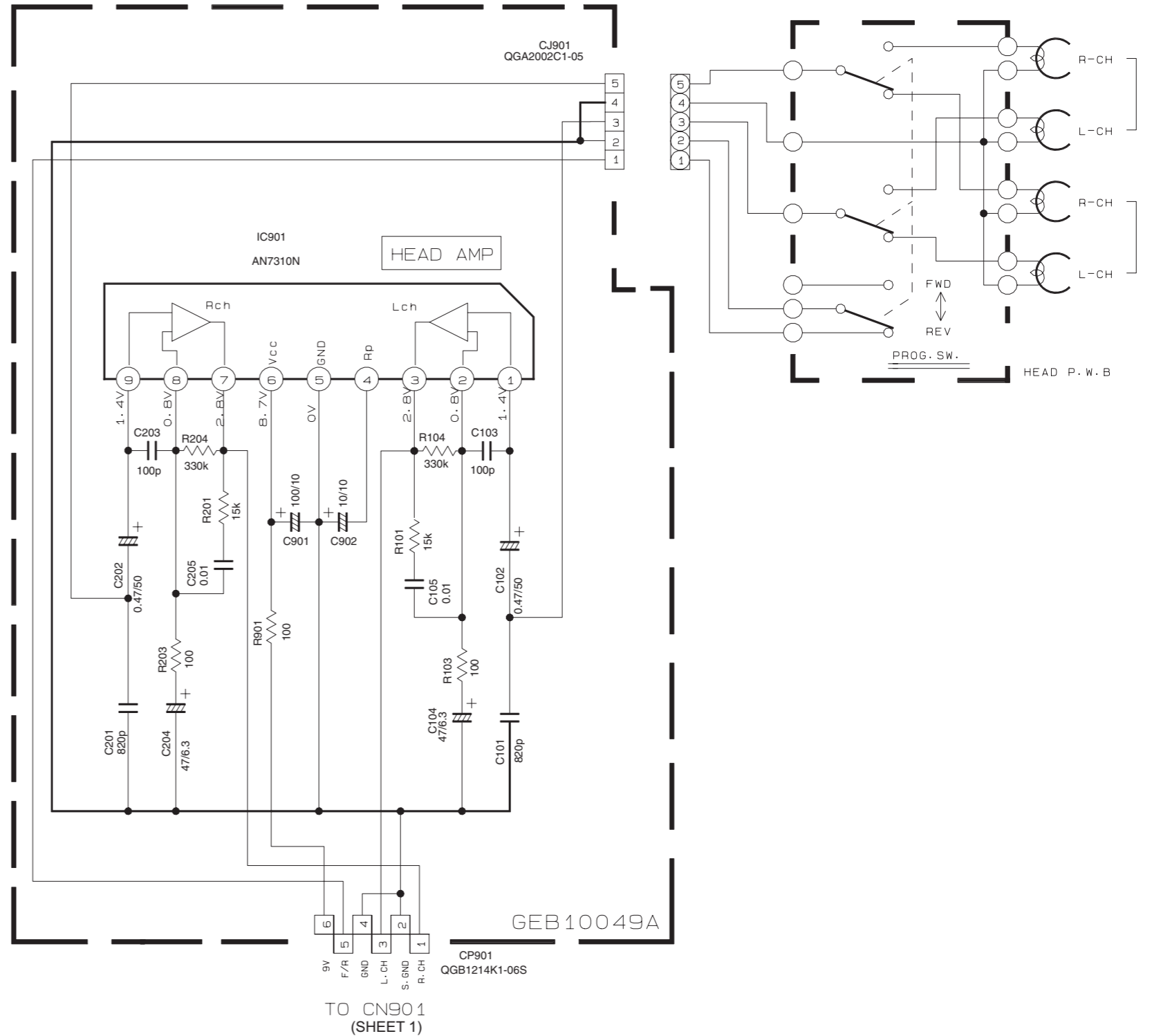


Head amplifier section



NOTES

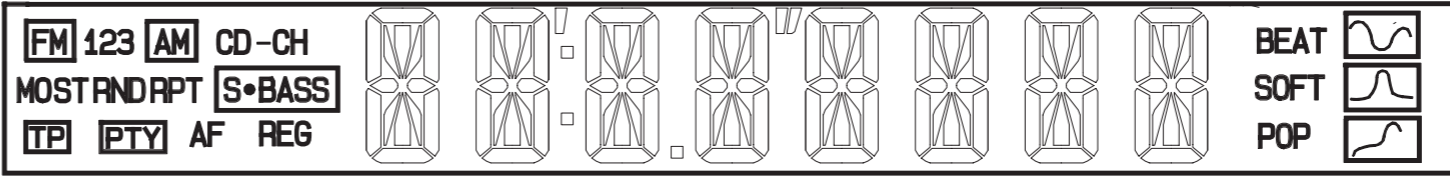
- VOLTAGES ARE DC-MEASURED WITH A DIGITAL VOLT METER WITHOUT INPUT SIGNAL.
CONDITION---FM MODE
- UNLESS OTHERWISE SPECIFIED.
ALL RESISTORS ARE 1/4W 5% CARBON RESISTOR OR 1/4W.1/10W 5% METAL GLAZE RESISTOR.
ALL CAPACITORS ARE 50V CERAMIC CAPACITOR.
ALL RESISTANCE VALUES ARE IN OHM (Ω).
ALL CAPACITANCE VALUES ARE IN μ F (P=pF).
ALL E-CAPACITORS ARE SHOW IN THE FORM OF CAPACITANCE (μ F)/RATED VOLTAGE(V).



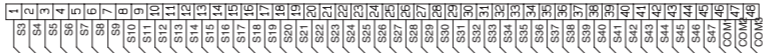
LCD & Key control section

NOTES

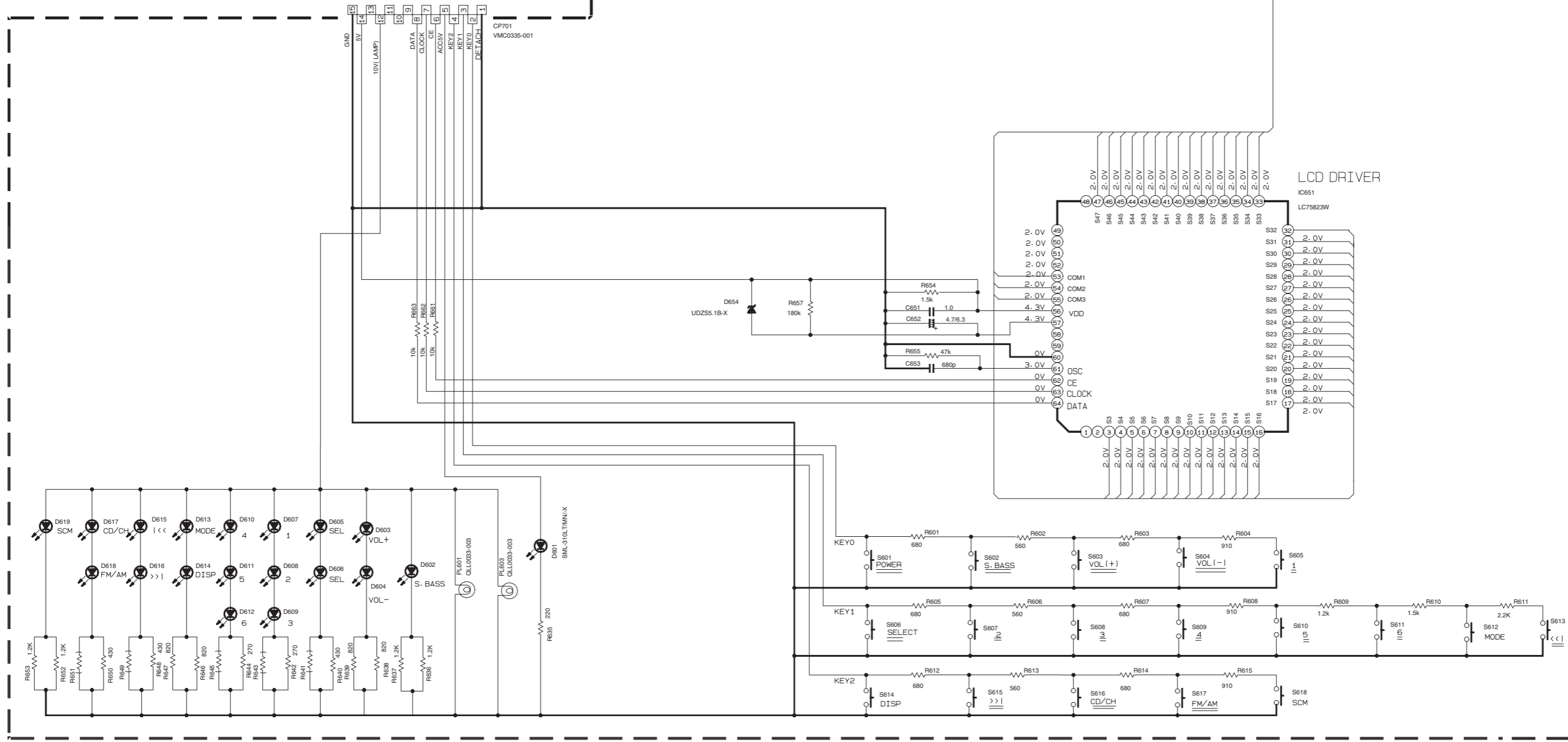
1. VOLTAGES ARE DC-MEASURED WITH A DIGITAL VOLT METER WITHOUT INPUT SIGNAL.
CONDITION - - - FM MODE
2. UNLESS OTHERWISE SPECIFIED:
ALL RESISTORS ARE 1/4W 5% CARBON RESISTOR OR 1/4W 1/10W 5% METAL GLAZE RESISTOR.
ALL CAPACITORS ARE 50V CERAMIC CAPACITOR.
ALL RESISTANCE VALUES ARE IN OHM(Ω).
ALL CAPACITANCE VALUES ARE IN μF(PμF).
ALL CAPACITORS ARE SHOWN IN THE FORM OF CAPACITANCE(μF) / RATED VOLTAGE(V).



QLD0333-001
LCD1

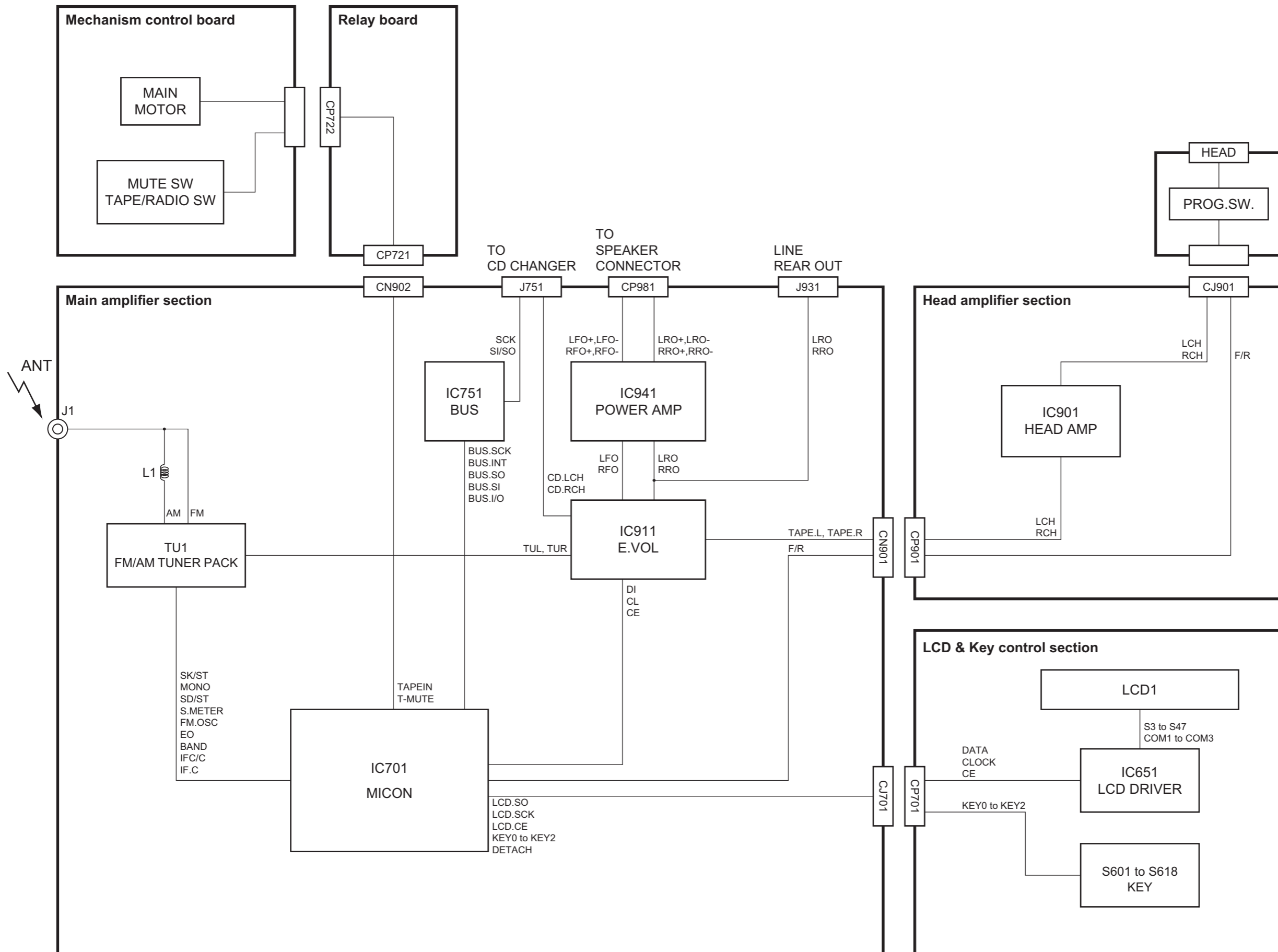


To CJ701
(SHEET 1)



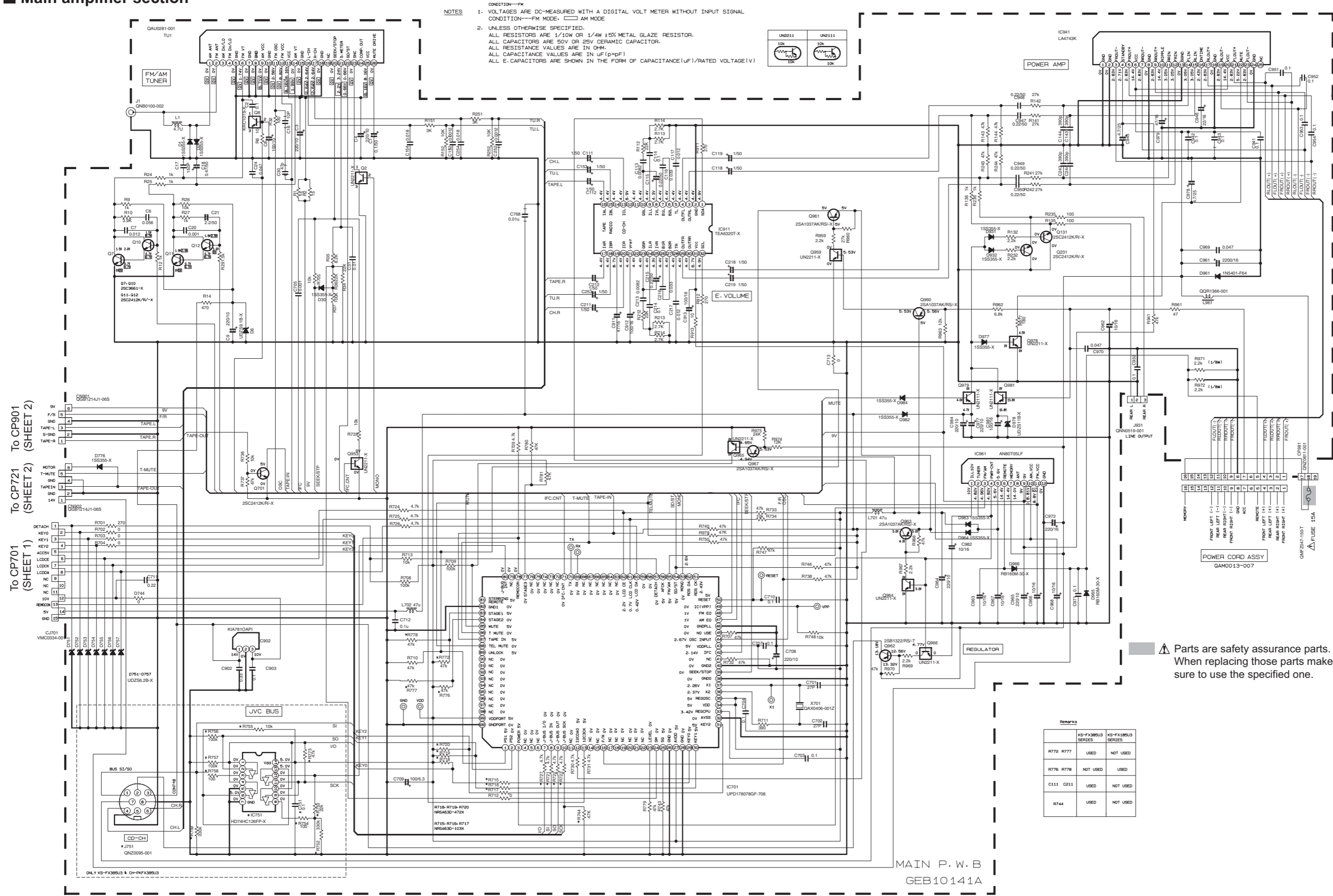
S601-S618: NSW0124-001X

Block diagram (For UT3, UH3, UN3, U3 version)



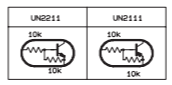
Standard schematic diagrams (For UT3, UH3, UN3, U3 version)

Main amplifier section



NOTES

- VOLTAGES ARE DC-MEASURED WITH A DIGITAL VOLT METER WITHOUT INPUT SIGNAL
CONDITION—FM MODE: AM MODE:
- UNLESS OTHERWISE SPECIFIED:
ALL RESISTORS ARE 1/10W OR 1/4W 1% METAL GLAZE RESISTOR.
ALL CAPACITORS ARE 50V OR 25V CERAMIC CAPACITOR.
ALL RESISTANCE VALUES ARE IN OHM.
ALL CAPACITANCE VALUES ARE IN UF (p=PF)
ALL E-CAPACITORS ARE SHOWN IN THE FORM OF CAPACITANCE (UF)/RATED VOLTAGE (V)



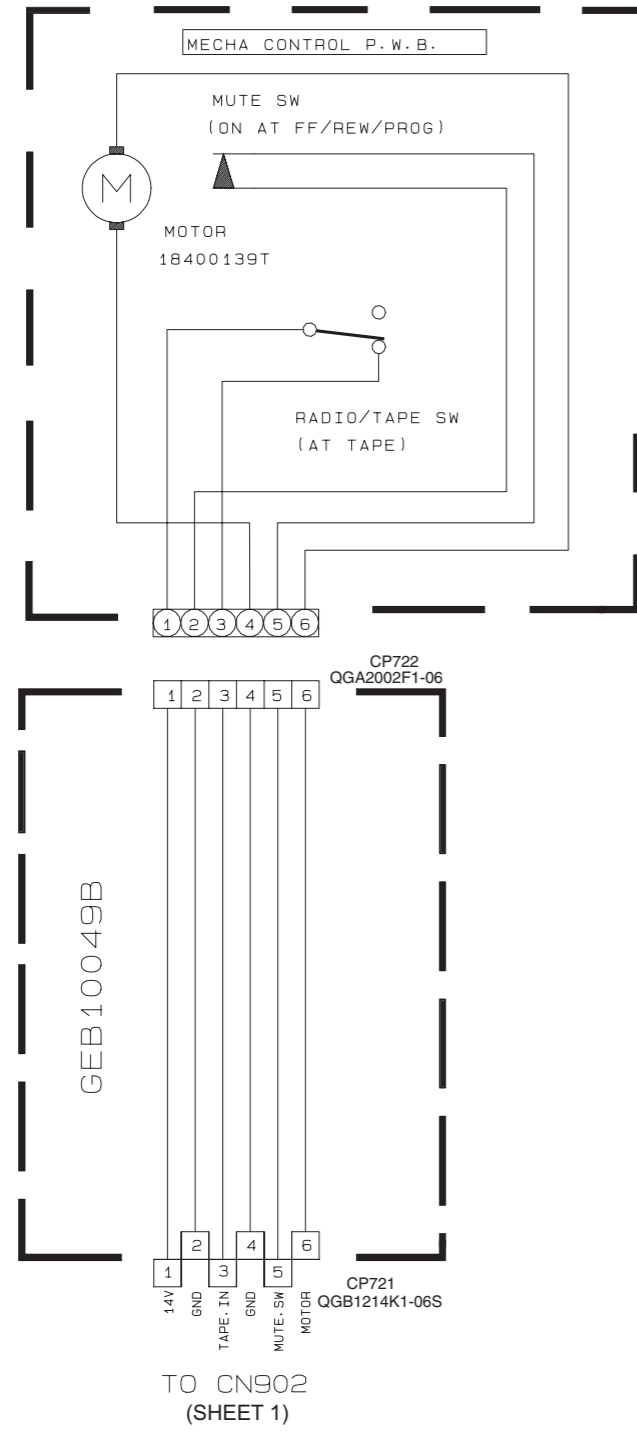
Parts are safety assurance parts. When replacing those parts make sure to use the specified one.

Remarks

Part No.	IC-FX385J3 SERIES	IC-FX189J3 SERIES
R772 R777	USED	NOT USED
R776 R778	NOT USED	USED
C111 C115	USED	NOT USED
R744	USED	NOT USED

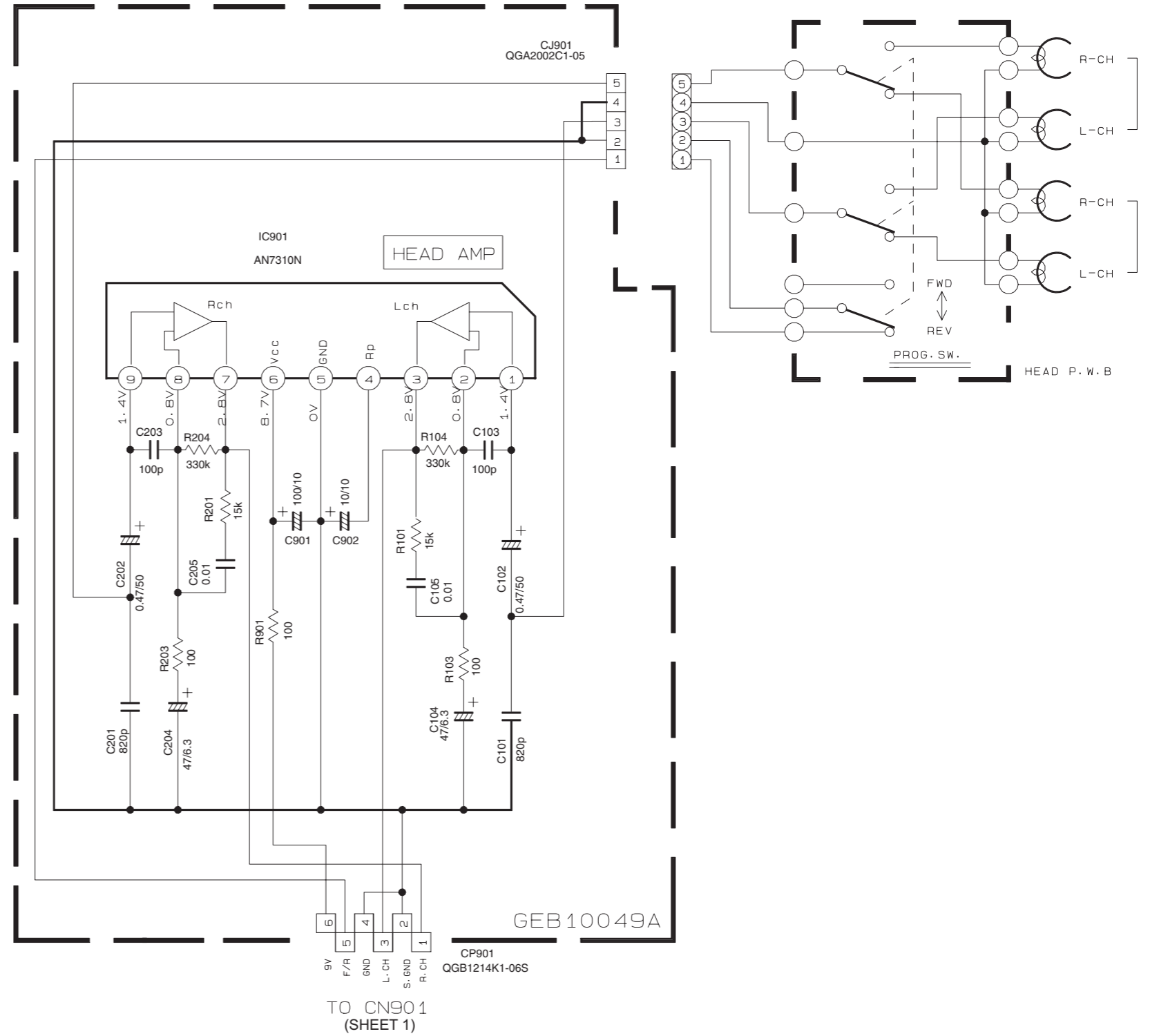
MAIN P. W. B
GEB10141A

■ Head amplifier section



NOTES

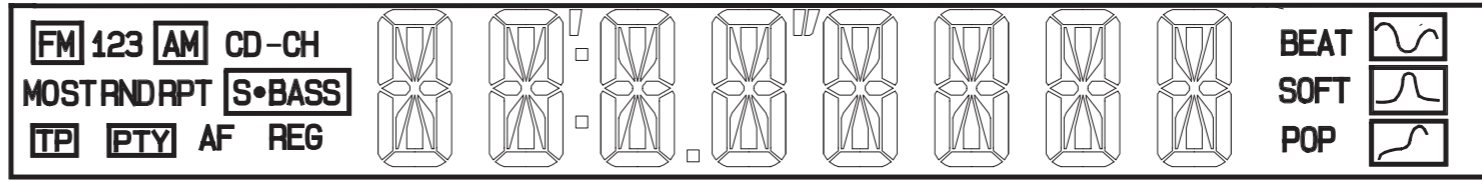
- VOLTAGES ARE DC-MEASURED WITH A DIGITAL VOLT METER WITHOUT INPUT SIGNAL.
CONDITION---FM MODE
- UNLESS OTHERWISE SPECIFIED.
ALL RESISTORS ARE 1/4W 5% CARBON RESISTOR OR 1/4W. 1/10W 5% METAL GLAZE RESISTOR.
ALL CAPACITORS ARE 50V CERAMIC CAPACITOR.
ALL RESISTANCE VALUES ARE IN OHM (Ω).
ALL CAPACITANCE VALUES ARE IN μ F (P=pF).
ALL E. CAPACITORS ARE SHOW IN THE FORM OF CAPACITANCE (μ F)/RATED VOLTAGE(V).



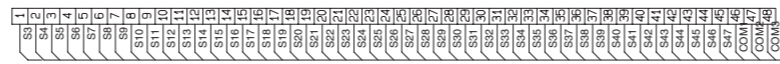
LCD & Key control section

NOTES

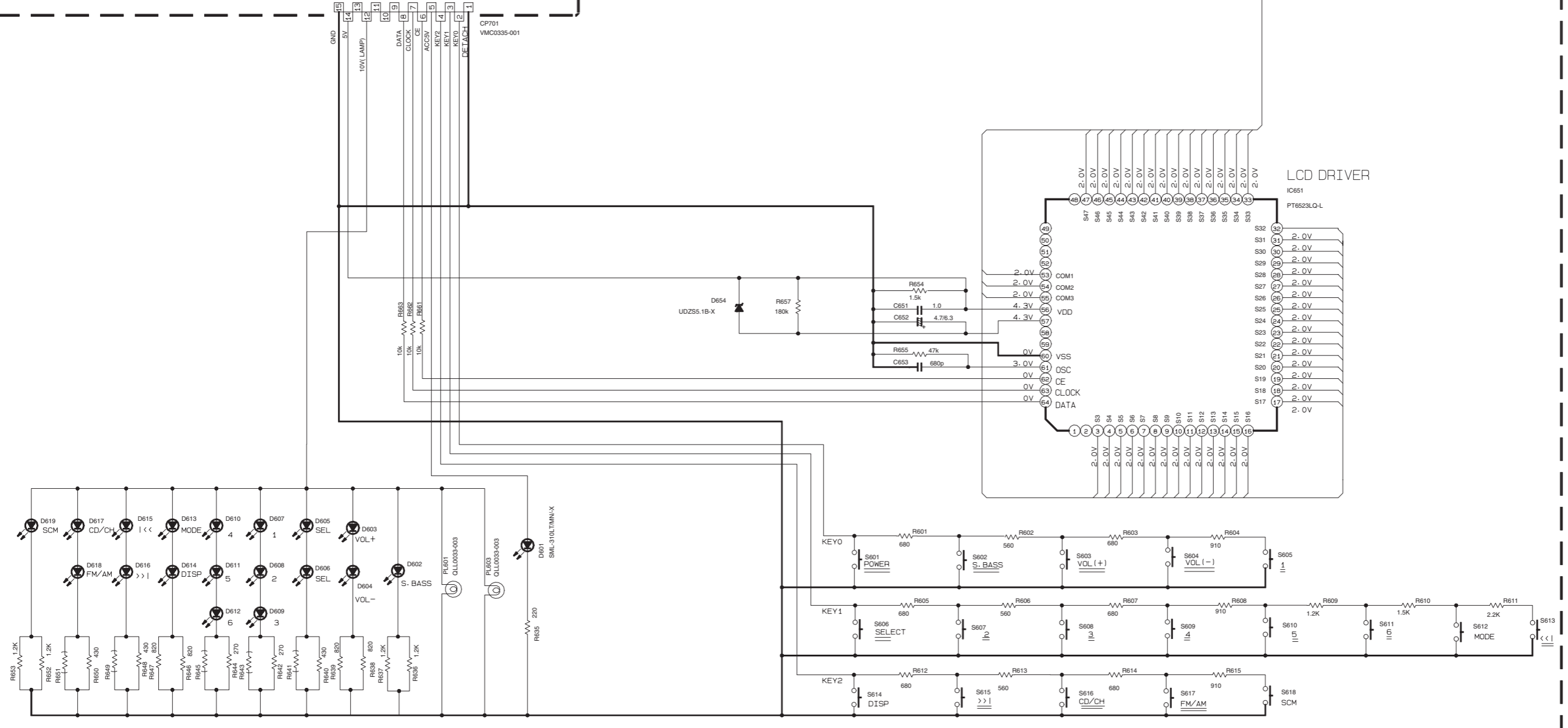
- VOLTAGES ARE DC-MEASURED WITH A DIGITAL VOLT METER WITHOUT INPUT SIGNAL.
CONDITION --- FM MODE
- UNLESS OTHERWISE SPECIFIED:
ALL RESISTORS ARE 1/4W 5% CARBON RESISTOR OR 1/4W 1/10W 5% METAL GLAZE RESISTOR.
ALL CAPACITORS ARE 50V CERAMIC CAPACITOR.
ALL RESISTANCE VALUES ARE IN OHM (Ω).
ALL CAPACITANCE VALUES ARE IN μF (P=PF).
ALL E. CAPACITORS ARE SHOWN IN THE FORM OF CAPACITANCE(μF) / RATED VOLTAGE(V).



QLD0333-001
LCD1



To CJ701
(SHEET 1)

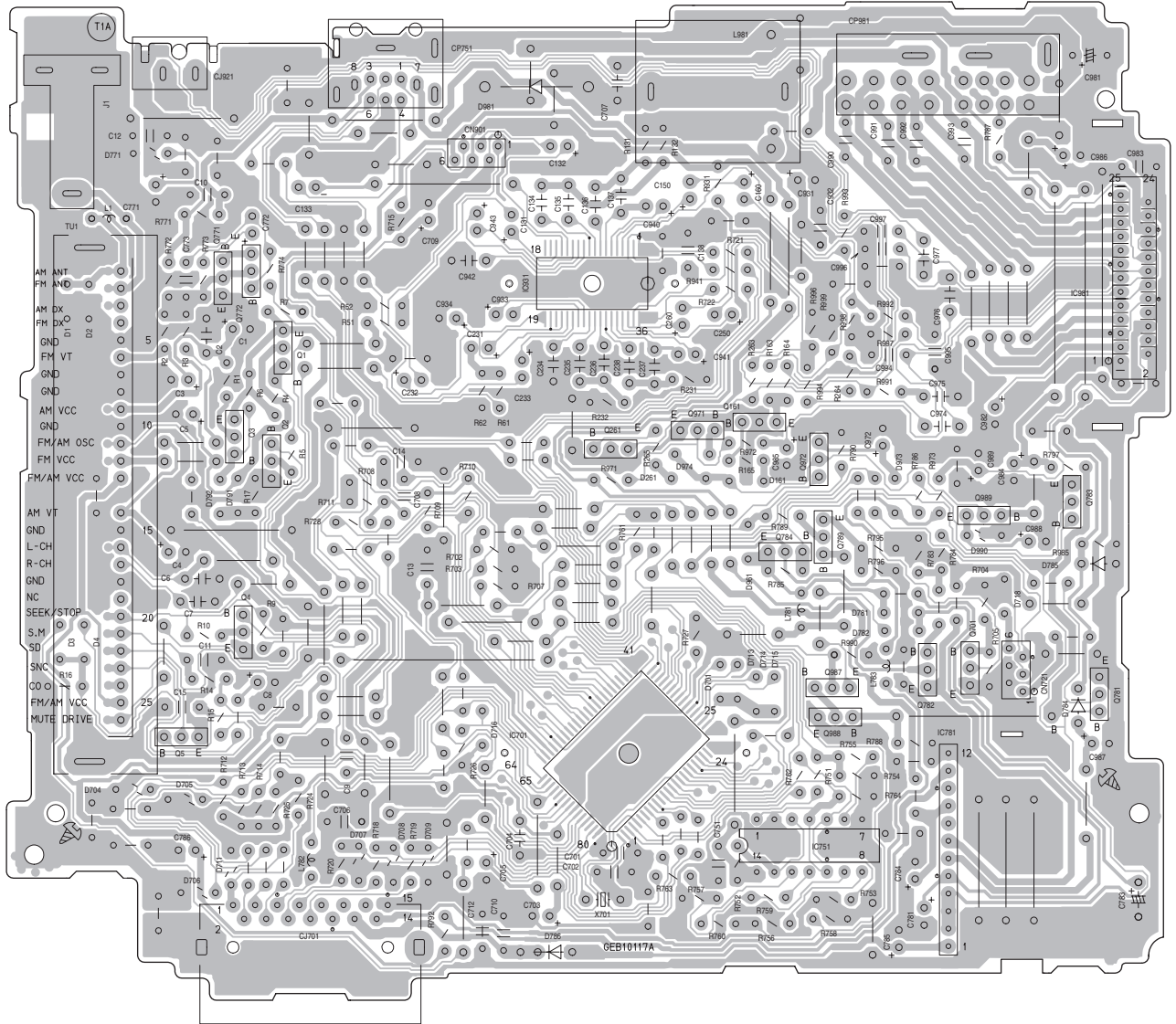


D602-D619: LNJ308G81/1-3/X

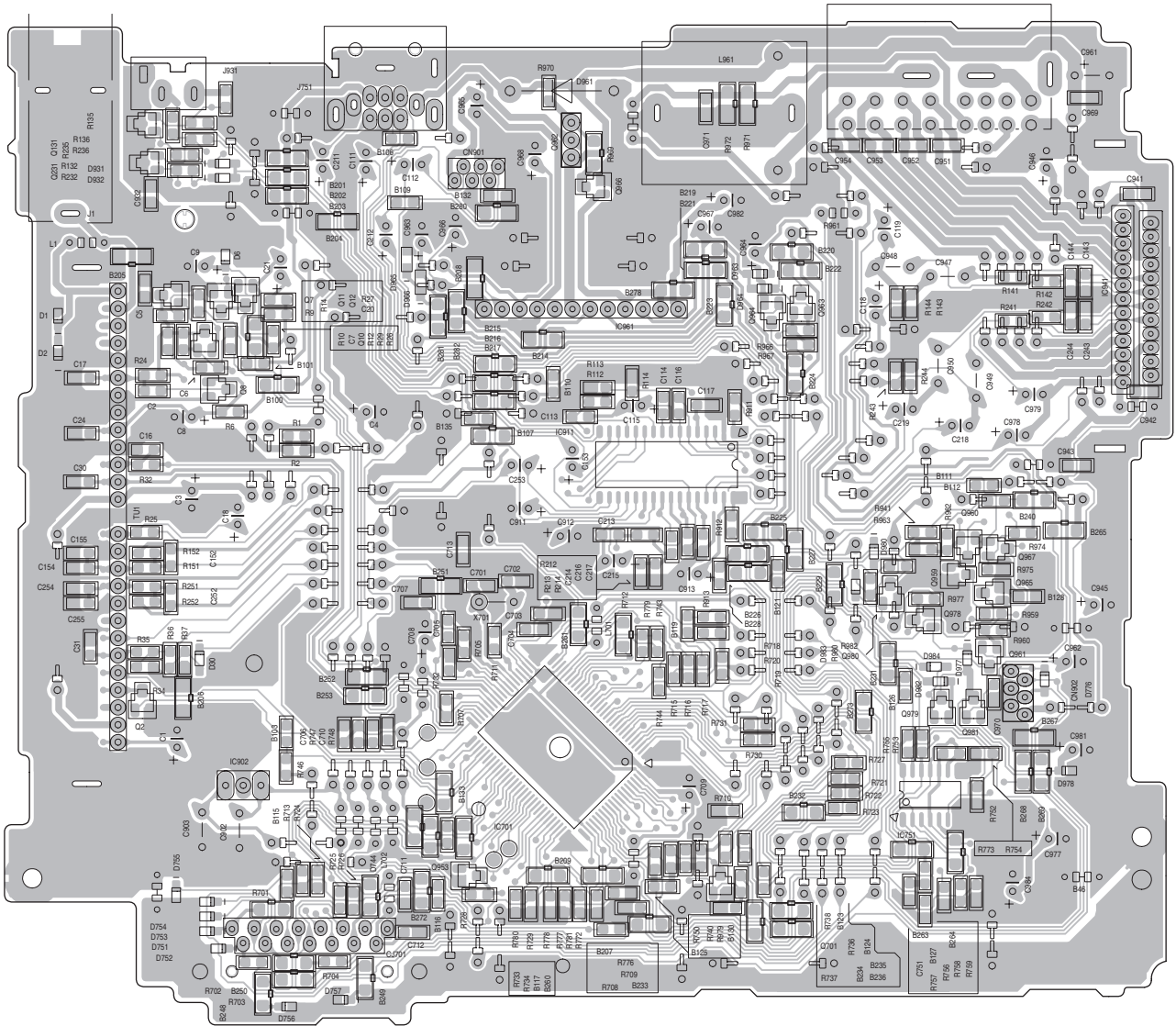
S601-S618: NSW0124-001X

Printed circuit boards

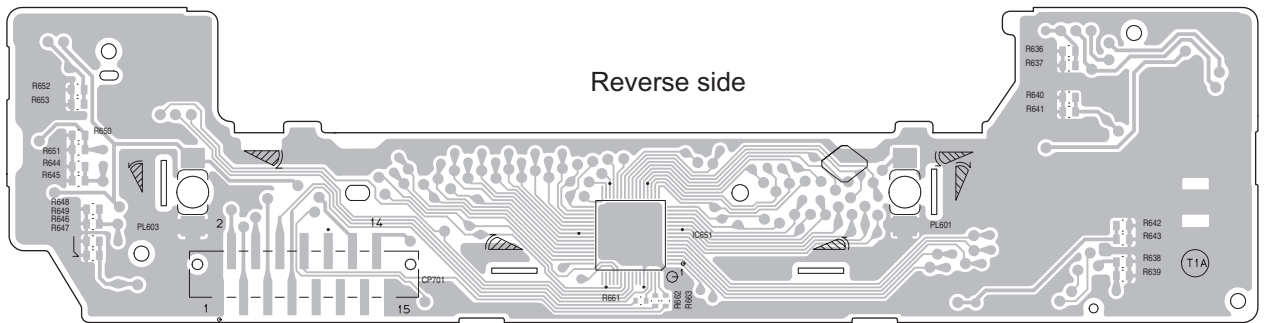
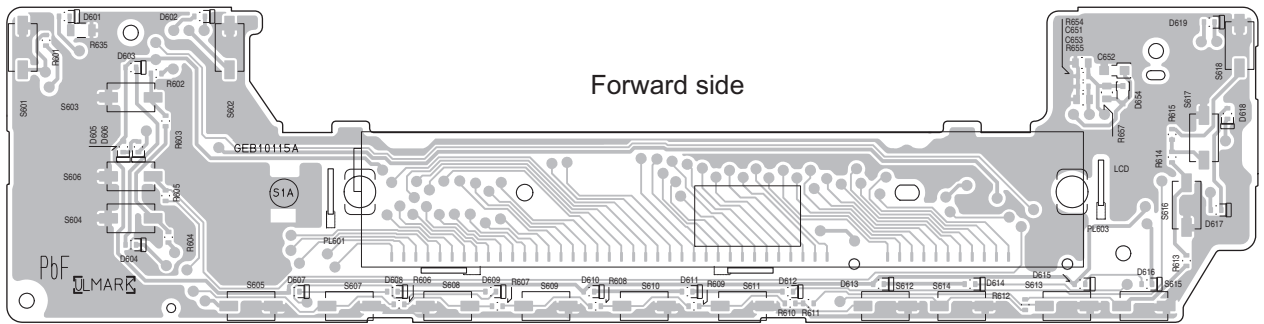
■ Main board (For UT, UH, UN U version)



■ Main board (For UT3, UH3, UN3 U3 version)

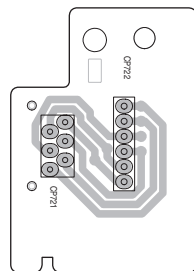


■ Switch board (Common)

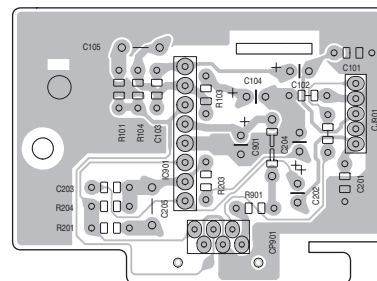


■ Mechanism control board (Common)

(Relay board)



(Head amplifier board)



JVC

Victor Company of Japan, Limited

AV & MULTIMEDIA COMPANY CAR ELECTRONICS CATEGORY 10-1,1chome,Ohwatari-machi,Maebashi-city,371-8543,Japan

(No.MA093BSCH)



Printed in Japan
VPT